

As an international brand engaged in the design and production of the flooring industry, Armstrong Flooring offers integrated solutions ranging from flooring and fittings to training regarding installation, with products covering homogeneous flooring, HET, LVT, VCT, wall materials, wood flooring, rubber flooring, linoleum flooring and carpets.

Armstrong Flooring, with more than 150 years of history and headquartered in Lancaster, Pennsylvania, USA, is a global leading brand of flooring design and production. For office, medical and educational buildings, Armstrong always adheres to the philosophy of rendering Eco-friendly, innovative, and high-quality flooring product designs, and provides customers with comprehensive integrated solutions and services to meet the varied decorative and functional needs of interior spaces in different areas.

Valemount™

SPC Locking System



5mm
LVT structure



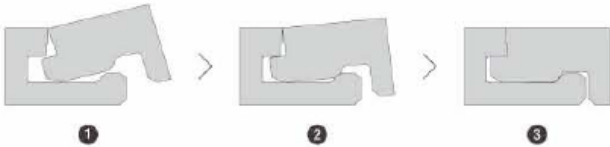
6.5mm
LVT structure



Product name	Standard	Properties
Natural Creations - Shengdanshi SPC Locking System	GB/T 34440	
Appearance		Wood grain, stone pattern
Product dimensions		305mm*610mm (Non-wood pattern); 228mm*1220mm (Wood pattern)
Overall thickness		5.0mm ; 6.5mm ((5.0mm hard bottom +1.5mm sound absorbing pad))
Wear layer thickness		0.30mm, 0.5mm
Lock type		Valinge 2G or 5Gi locking system
Safety performance		
Pollution and chemical reagent resistance	ISO 26987	Qualified
Limit of harmful substances	GB/T 34440	Qualified
Peel strength	GB/T 34440	Average value $\geq 75\text{N}/50\text{mm}$, single value $\geq 70\text{N}/50\text{mm}$
Flame retardance	GB 8624	Bf1-s1
Slip resistance level	DIN51130	$\geq \text{R9}$
Performance data		
Length deviation	GB/T 34440	$\leq 228.6\text{mm}$, $\pm 0.2\text{mm}$; $228.6 < \text{ln} \leq 304.8\text{mm}$, $\pm 0.3\text{mm}$; $> 304.8\text{mm}$, $\pm 0.5\text{mm}$
Width deviation	GB/T 34440	
Overall thickness deviation	ISO 24346	+0.13/-0.10mm, limit +/-0.15mm
Wear layer thickness deviation	ISO 24340	"Average value: +13%, -10%, maximum value not exceeding +0.10mm, -0.10mm; Single value: $\leq 0.05\text{mm}$ or 15% below the average value"
Squareness	ISO 24342	$> 400\text{mm}$, $\leq +/-0.35\text{mm}$; $< 400\text{mm}$, $\leq +/-0.25\text{mm}$
Residual indentation	GB/T 34440	$\leq 0.40\text{mm}$
Dimensional stability after heating	ISO 23999	$\leq 0.25\%$
Color fastness	GB/T 34440	≥ 6
Warping due to coldness and heat	GB/T 34440	$\leq 2\text{mm}$
Wear resistance:	GB/T 34440	T
Castor wear	EN 649	Pass
6.5mm sound absorption index	ISO 717-2	$\geq 18\text{dB}$



Välinge 2G
Välinge 2G folding lock system



Properties and advantages

- Powerful fastening force
- Easy to install
- Strong locked force Longitudinally and horizontally
- The floor is not damaged during installation
- Minimize the risk of floor noise generated



Välinge 5G-i Push DownSystem



Properties and advantages

- Easy to install
- One-piece lock catch with powerful fastening force
- Optimized lock catch design of 5G-i locking system reduces the risk of causing damage to the floor during installation
- Compatible with materials with different thickness to a certain degree

SPC

Stone Plastic Composite is also known as RVP (rigid vinyl plank) in Europe and the United States. Extrusion molding is realized by professional equipment under high temperature after being heated and mixed by additives including PVC powder, mountain flour, elasticizer and stabilizer.

Selling Points

- Sound dimensional stability, no deformation or expansion, easy to use and maintain;
- Water-proof and moisture-proof;
- Protection against insects and termites, mildew resistant
- Environmental-friendly, without such harmful substances as benzene and formaldehyde, low TVOC;
- Free of heavy metals;
- Recyclable;
- With sound-absorbing bottom, excellent sound absorption performance;
- B1-level fireproof, self-extinguishing in case of fire, without producing any toxic gases;
- Simple installation and construction, optimizing installation cost and time;



Välinge 2G
Välinge 2G
folding lock
system

WOOD GRAIN



TP037
TP037V5

Roan Oak Cocoa



TP039
TP039V5

Roan Oak Charcoal



W0103
W0103V5

Drawbench Light



W0100
W0100V5

Fruitwood Natural



W0165
W0165V5

Acacia Implexa



W0151
W0151V5

Cottage Chestnut



W0000
W0000V5

Warm Hickory



W0108
W0108V5

French Washed Oak



W0150
W0150V5

Chestnut Bronze



W0152
W0152V5

High Land Oak

All patterns are available for 5G lock catch, with the No. -V5, Please come to local sales or customer service staff for details.

All patterns are designed in accordance with real texture, and color difference exist; the effect is subject to physical products

STONE PATTERN



SE204
SE204V5

Beige Gold



AB910
AB910V5

Cottage Chestnut



SE215
SE215V5

Silk Scarf Platinum



SE216
SE216V5

Silk Scarf Black Silver



Vålinge 5G-i
Push DownSystem